

PROFESSIONAL TRAINING CATALOG



Our Contacts:

(+216)28 538 007

(+216)75 351 500

(+216)36 040 004

(+216)90 164 709

(+216)75 398 180

(+216)75 398 177

Mails:

mywaycabinet@gmail.com

stetraser@yahoo.fr

contact@jgh.com.tn

Location:

108 Street Ahd Jadid- Sprols Zrig Gabès

Near "la salle couverte"



LIKE US ON FACEBOOK!

OUR PARTNERS



LET'S SUCCEED TOGETHER!



SUMMARY

1	LEADERSHIP & MANAGEMENT
2	HSE (HEALTH, SAFETY, AND ENVIRONMENT)
3	SAFETY SYSTEM STUDIES
3	PIPING
4	WELDING
5	NON-DESTRUCTIVE TESTING
5	CORROSION AND METALLURGY
6	COATING, PAINTING, LINING, PC INSPECTION
6	MECHANIC
6	CONSTRUCTION AND CIVIL ENGINEERING
7	ELECTRIC
8	AUTOMATION
8	HVAC (HEATING, VENTILATION, & AIR CONDITIONING)
9	EXPLOSIVE ATMOSPHERE (ATEX)
9	CLASSIFICATION STUDIES

PRESENTATION

MY WAY is a professional training center, approved by the State under No. 17-129-81. It gives you the opportunity to improve yourself and develop throughout your professional life. Made up of the best trainers and which aims to update your technical skills. We offer a 100% practical course to allow candidates to integrate easily into professional life: 100% practical training Individual or collective training (small group).

- **Our training programs have been developed by technical pedagogical experts and certified trainers.**
- **Our excellent training is based on a perfect knowledge of your professional environment.**
- **The skills of our trainers are applied in many disciplines, with high-level expertise recognized in multiple areas.**
- **Lecture with 100% practical workshops provided by senior experts with solid experience.**

LOCATION

We are located in Zrig Gabès, Sepsolès city, near the indoor sports hall, after the University of Gabès (2 minutes walk).

It's easily accessible from any direction you come from.



OUR EDUCATIONAL APPROACH

Our training courses are designed to alternate theory and practice by integrating scenarios, practical exercises on real-life cases and examples from field experience in order to provide a complete illustration of the themes addressed. If necessary, technical visits to demonstration sites are organized.

The training courses favor the exchange, sharing and development of good practices.

Each training workshop benefits upstream from a specific and individualized preparation and

downstream from an evaluation by both the participants and the trainers. The participants learning assessment process follows the following steps:

- * Preliminary assessment of participants prerequisites.
- * On-the-spot assessment of acquired knowledge through a multiple choice test distributed at the end of the training.
- * Cold assessment of participants achievements.

OUR LOGISTICS

Our very calm and green environment is very conducive to the assimilation and inhalation of knowledge.

- Modern training rooms equipped with computer, teaching and audiovisual equipment.
- Wifi available in the training rooms
- Well-equipped workshops available located in Bouchemaa -Gabès

OUR AUDIENCE

Our training courses are intended for industrial and service companies, hotels, local authorities, consultants, civil society, public bodies, the administration and those with green projects.

OUR TRAINERS

Our trainers are field experts, selected for their academic background, their business expertise and their teaching skills.

LEADERSHIP & MANAGEMENT

PROGRAMS

Maximize team productivity, drive breakthrough innovation, and gain a competitive edge for your company. Through hands-on exercises and dynamic discussions, you'll learn management theories and leadership best practices to help you navigate complex challenges and capitalize on emerging opportunities.

Management of quality, safety and the environment:

- **ISO9001Ver2015 Quality management system requirement**
- **ISO14001V2015 Environmental management system requirement**
- **ISO45001 V2015 Occupational Health and Safety Management System**
- **Internal audit of integrated management system QHSE**
- **The Risk assessment of hazards and environment impacts**
- **Preparation of all system documents**
- **Preparation of all systems policies and objectives**



HSE (HEALTH, SAFETY, AND ENVIRONMENT)

PROGRAMS

For Confined Space, Working Safely at Height and Scaffolding Trainings, we cover the theoretical and practical training in their dangers, and familiarisation with the use and application of the specific teaching facilities and equipment of the specific teaching facilities and equipment

We provide an approved course and learning trainings to a wide range of training orientated to Oil and gas industry including Chemical, Drilling, Electrical, Environmental, Mandatory, Mechanical, Operations, Processing, Professional and Safety,,

List of HSE course:

- HSE Awareness (Induction)
- HIS Awareness & Escape
- Basic Fire Extinguisher
- Display Screen Assessments – Ergonomics
- Manual Handling
- Noise / Hearing Protection
- Waste Management
- Environmental Health & Safety Risk Management (EHS)
- Fire Warden
- Riggers and Banks man Awareness
- SCBA (Self Contained Breathing Apparatus)
- Sewage Safety – Workers
- Sewage Safety – Managers
- Hazard Analysis at Work
- Safety at Home
- Welding Safety
- Safety for Supervisors
- Gas Testing
- Incident Investigation
- Electrical Safety
- Electrical Safety Rules
- Nitrogen Awareness
- COSHH
- Chemical Hazard Awareness
- Risk Assessment
- Permit to Work
- Construction Safety
- Office Safety



Lifting and Handling

- Powered industrial trucks
- Fixed and mobile cranes
- Crane Driver
- Slings techniques

SAFETY SYSTEM STUDIES

PROGRAMS

- Firefighting protection system
- Firefighting detection system
- HAZOP studies
- HAZID studies
- SIMOPS studies
- Firefighting system inspection
- Environmental analysis
- Design and erection of safety signs
- Preparation of project HSE Plan
- Design of excavation and emergency panel



PIPING

PROGRAMS

- Piping Fundamentals
- Fittings & Ratings
- Piping Materials
- Pipe Supports & Selection
- Insulation & Cladding
- Piping Documents
- Codes & Standards
- Piping equipments
- Symbols in Piping System
- Pipe Routing
- Drawing Interpretation
- Isometric and Orthographic Drawing
- Pigging
- Integrity checking of a Pipe / Pipeline System
- Testing & Inspection



WELDING

PROGRAMS

- Visual inspection of welds
- Welding procedure specification
- Certification of welders according to international standards
- Welding procedure qualification

IMPLANTATION OF QSE AND WELDING MANAGEMENT

IMPLANTATION OF QUALITY MANAGEMENT SYSTEM IN ACCORDANCE WITH ISO9001-2015

- Implantation of Environmental management system in accordance with ISO 14001-2015
- Implantation of Health Safety management system in accordance with OHSAS 18001-2007
- Implantation of Health and Safety management system QHSE
- Preparation of all system documents.
- Preparation of all system policies and objectives.
- Implantation of Welding System in accordance with ASME- ISO3434-API
- Implantation of CE Marketing Management system
- Welding management system:ASME STAMP – ISO3834-CE

HAZARDS studies: HAZOP-HAZID-SIMOPS-legal classification

- The requirement of standard ISO/CEI 17025V2012
- Requirements of standard ISO/CEI 17025

WELDING INSPECTION

- Interpretation of Project specifications.
- Interpretation of code and standards.
- Preparation of Quality Plan.
- Preparation of Inspection and Test Plan ITP.
- Preparation and review of Inspection procedure.
- Preparation and review of NDE procedure.
- Review of design calculation and drawings.
- Inspection of raw material: flange, head, pipe ...
- Survey of cutting and Joining process.
- Witness of all NDE and testing.
- Witness of all hydrostatic and pneumatic tests.
- Visual inspection
- Dimensional and geometrical Inspection.
- Welder Qualification.
- Preparation and qualification of WPS.
- Inspection and analysis of existing equipment.
- Verification of welding equipment (NEMA).
- Failure and crack Analysis.
- Third party expertise.

WELDING ACTIVITY

- IWE: International Welding Expert
- ISW: International Skilled Welder
- IWI: International Welding Inspector
- STS: API 6sO Storage Tank Specialist
- PVS: Pressure Vessel Specialist
- PLS: Pipe-Line Specialist
- PPS: Process Piping Specialist



NON-DESTRUCTIVE TESTING

PROGRAMS

- RADIOGRAPHY (RT)
- MAGNETIC (MT)
- DYE PENETRANT (PT)
- ULTRASONIC (UT)

NONDESTRUCTIVE EXAMINATION

LIQUID PENETRANT EXAMINATION

- MAGNETIC PARTICLE EXAMINATION.
- RADIOGRAPHIC EXAMINATION.
- LASER DIMENSIONAL EXAMINATION
- TANK AND FOUNDATION SETTLEMENT EXAMINATION
- TANK AND FOUNDATION SETTLEMENT EXAMINATION
- VACUUM BOX TESTING.
- PNEUMATIC TESTING.
- ULTRASONIC THICKNESS MEASUREMENT
- PREPARATION OF NDE PROCEDURE AND NDE MAP
- TOPOGRAPHIC MEASUREMENT DURING HYDRO TEST

REGULATION VERIFICATION

- LIFTING INSPECTION (CRANE - SCAFFOLDING...)
- ELECTRICAL INSTALLATION VERIFICATION.
- IN SERVICE TANK INSPECTION.
- PIPING AND PRESSURE VESSEL INSPECTION.
- TANK GAUGING



CORROSION AND METALLURGY

PROGRAMS

THE COURSE INCLUDES:

- CORROSION OF COMMON METALS
- BASIC CORROSION SCIENCE

COMMON CORROSION MECHANISMS: GALVANIC, CREVICE, PITTING, DEPOSITION, CORROSION

UNDER DEPOSITS/ LAGGING, STRESS CORROSION CRACKING

- THE ELECTROCHEMICAL SERIES AND ITS PRACTICAL USES

- METHODS FOR PREVENTING OR MANAGING CORROSION, INCLUDING INHIBITORS/ PASSIVATION

- INTRODUCTION TO CATHODIC PROTECTION

- SURFACE PREPARATION CHALLENGES, PAINTS & COATING

- ATMOSPHERIC CORROSION

- MATERIAL SELECTION & DESIGN

CORROSION ACTIVITY

- CPS: CATHODIC PROTECTION SPECIALIST
- ICA: INTERNATIONAL COATING APPLICATOR
- ICI: INTERNATIONAL COATING INSPECTOR



COATING, PAINTING, LINING, PC INSPECTION

PROGRAMS

- 1- MEASUREMENT AND INTERPRETATION OF DFT
- 2- HOLIDAY INSPECTION
- 3- ADHESION TEST
- 4- INSULATION INSPECTION.
- 5- CP SYSTEM INSPECTION
- 6- RUST GRAD VERIFICATION
- 7- PREPARATION GRAD BY BLAST CLEANING INSPECTION.
- 8- PREPARATION GRAD OF WELD AND CUT EDGE SURVEY.
- 9- ASSESSMENT OF SURFACE CLEANIN
- 10- ANALYSE OF SOLUBLE CONTAMINANT (BRESLE METHOD)
- 11- MEASUREMENT AND INTERPRETATION OF WFT



MECHANIC

PROGRAMS

- POWER TRANSMISSION SYSTEM
- HYDRAULIC AND PNEUMATIC
- PUMP SYSTEM
- HEAVY DUTY AND DIESEL MECHANIC
- **PRESSURE VESSEL**
- SAFETY OF GAS AND STEAM PRESSURE VESSEL
- MAINTENANCE OF PRESSURE EQUIPMENT IN HAZARDOUS INDUSTRIES
- THE CONDUCT OF BOILERS
- GAS INSTALLATION IN INDUSTRIAL FACILITIES



CONSTRUCTION AND CIVIL ENGINEERING

PROGRAMS

- CONSTRUCTION AND CIVIL ENGINEERING FUNDAMENTALS :
MATERIALS SCIENCE AND KEY PROPERTIES
- CONSTRUCTION PROJECTS AND SURVEYING STRATEGIES :
STRUCTURAL MECHANICS AND ANALYSIS
- CALCULATION AND STANDARDS IN CONSTRUCTION



ELECTRIC

PROGRAMS

- HIGH AND LOW VOLTAGE ELECTRICAL CERTIFICATION
- ELECTRICAL INSTALLATION IN INDUSTRIAL FACILITIES
- ELECTRICAL INSTALLATION IN ESTABLISHMENT RECEIVING PUBLIC
- ELECTRICAL SAFETY
- ELECTRICAL CONTROL PANEL DESIGNING
- INDUSTRIAL ELECTRICAL CONTROL-DESIGN AND INSTALLATION
- BASICS OF RELAYS, CONTACTOR, MCB, MCCB, ELCB, ACB, VCB ETC.
- WORKING DETAILS OF DIFFERENT TYPES OF ELECTRIC MOTORS
- DESIGNING OF CONTROL CIRCUITS USING CONTACTORS, RELAYS, TIMERS ETC.
- DOL, STAR DELTA STARTER DESIGNING FOR 3 PHASE MOTORS WITH SPECIFICATION
- PRACTICAL WIRING SESSION ON DIFFERENT CONTROLS
- MOTOR DRIVES - AC DRIVES AND DC DRIVES
- SAFETY AND MANAGEMENT CONCEPTS OF DESIGNING A PROJECT
- **CONTROL PANEL DESIGNING**
- DIFFERENT TYPES OF PANELS
- BASIC COMPONENTS TO BE INSTALLED IN A PANEL
- WIRING DETAILS OF PANEL
- SPECIFICATION AND PHYSICAL DEMENSION OF COMPONENTS
- EARTHING AND CABLING OF PANELS – STANDARD PROCEDURES
- P & I DIAGRAM PREPARATION
- PLCS IN ELECTRICAL CONTROLS
- NEED OF PLC IN ELECTRICAL CONTROLS
- BASICS OF PLC
- ARCHITECTURE – MODULE
- NO / NC, TIMERS, COUNTERS ETC.
- PROGRAMMING PRACTICE
- **INSTRUMENT CALIBRATION AND VERIFICATION**
- TEMPERATURE AND PRESSURE DEVICES
- LEVEL AND FLOW DEVICES
- FINAL CONTROL ELEMENTS
- ANALYZERS
- THE REQUIREMENT OF STANDARD ISO/CEI 17025V2012
- REQUIREMENTS OF STANDARD ISO/CEI 17025
- INTRODUCTION TO INSTRUMENT CALIBRATION
- CALIBRATION PREPARATION AND PNEUMATIC INSTRUMENT CALIBRATION
- ELECTRONIC INSTRUMENT CALIBRATION
- INSTRUMENT CALIBRATION
- **PRINCIPLES OF INSTRUMENT CALIBRATION**
- CALIBRATION
- CALIBRATION CONNECTIONS
- IDENTIFICATION OF TEST POINTS
- CALCULATING INPUT / OUTPUT VALUES
- CALIBRATING PNEUMATIC INSTRUMENT
- CALIBRATION CONSIDERATIONS AND PROCEDURES
- CALIBRATING AN ELECTRONIC INSTRUMENT
- CALIBRATION CONSIDERATIONS AND PROCEDURES



AUTOMATION

PROGRAMS

PROGRAMMABLE LOGIC CONTROLLER (PLC)

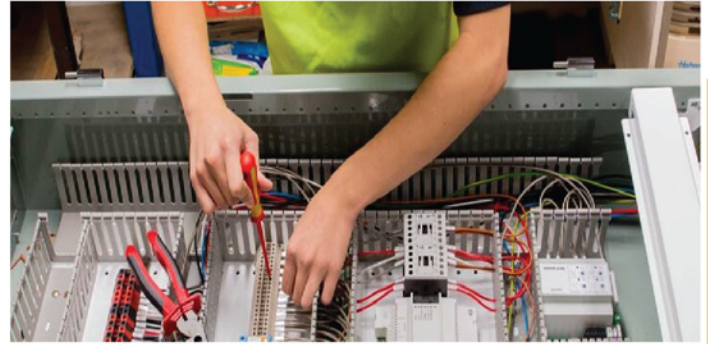
- AUTOMATION TRAINING
- PLC TRAINING
- SCADA TRAINING
- HMI TRAINING
- DSC TRAINING
- VFD TRAINING
- PROCESS CONTROL AUTOMATION
- ELECTRICAL CONTROL PANEL DESIGNING
- INDUSTRIAL NETWORKING TRAINING
- EMBEDDED SYSTEM & ROBOTICS TRAINING
- BUILDING MANAGEMENT SYSTEM TRAINING
- BMS TRAINING
- CCTV & SECURITY SYSTEMS TRAINING
- FIELD INSTRUMENT PNEUMATICS TRAINING
- SOFTWARE & IT TRAINING

SIMENS

- SIMATIC WINCC UNIFIED SYSTEM
- SIMATIC WINCC V7
- SIMATIC ENERGY MANAGEMENT

SOFTWARE

- SIMATIC WINCC (TIA PORTAL)
- SIMATIC WINCC FLEXIBLE



HVAC (HEATING, VENTILATION, & AIR CONDITIONING)

PROGRAMS

- Introduction to HVAC
- Refrigerants
- Project Procurement works
- Cooling Load estimation
- Preparation of Drawings
- Heating Loss estimation
- Clean Rooms/ Cold Stores
- Air Distribution System
- Ventilation system
- Chilled Water system
- Equipment Selection
- Erection of Equipments
- Maintenance
- Estimation of Projects



EXPLOSIVE ATMOSPHERE (ATEX)

PROGRAMS

- INTRODUCTION TO HAZARDOUS ATMOSPHERES & EXPLOSION PROTECTION TECHNIQUES
- HAZARDOUS AREA PRODUCTS - QA SYSTEM PLANNING
- ATEX / DSEAR OVERVIEW
- ATEX / DSEAR
- RISK ASSESSMENT AND HAZARDOUS AREA CLASSIFICATION
- SAFE USE OF ELECTRICITY IN POTENTIALLY EXPLOSIVE ATMOSPHERES & INTRINSIC SAFETY
- TRAINING FOR DESIGNERS OF EX EQUIPMENT
- BESPOKE TRAINING SOLUTIONS



CLASSIFICATION STUDIES

PROGRAMS

- REPORT OF COMPANY ORGANIZATION.
- COMPANY IMPLANTATION DRAWING
- COMPANY ARRANGEMENT DRAWING
- EXTRACT OF GEOGRAPHIC MAP
- HAZARDS STUDIES
- NONTECHNICAL ABSTRACT OF HAZARDS STUDIES
- INTERNAL OPERATION PLAN
- INSTRUCTION FOR HYGIENE AND SAFETY
- ENVIRONMENTAL STUDIES
- DEPOLLUTION STUDIES

